

# Daan Kneppers



**Green Works**  
is a grower of young  
planting material for the  
professional cultivation of  
peonies, cut flowers and  
pot plants







Continue  
flowering



Witte Paal 341  
1742 LE Schagen  
The Netherlands  
T: +31(0)224 590 173  
F: +31(0)224 590 925  
info@green-works.nl  
www.green-works.nl

Agapanthus

# L'Amour d'été

Early flowering  
Compact strong stem  
Continue flowering through the summer  
Guaranteed flowering

Breeders right protected variety

Vroeg bloeiend  
Korte stevige steel  
Hele zomer doorbloeiend  
Bloei garantie

Zwaaierechtighg beschermd ras



# Agapanthus Summer Love

- Available in Blue and White
- Continue flowering for whole summer
- Produces masses of flowers
- Propagated by tissue culture
- Virus free stock
- Breeding by Green Works







**Green Works**  
 Breeding & Young Plants  
 Witte Paal 341  
 1742 LE Schagen  
 The Netherlands  
 T: +31(0)224 590 173  
 F: +31(0)224 590 925  
 info@green-works.nl  
 www.green-works.nl

# CannaSol™

<b>Compact</b>	<b>Compact</b>
<b>Long blooming time</b>	<b>Lange bloeitijd</b>
<b>Large color range</b>	<b>Veel kleur variaties</b>
<b>Virus free / from tissue culture</b>	<b>Virus vrij / van weefselkweek</b>

Seedling right protected variety

Plantenrechtelijk beschermd ras



# CannaSol

- Available in wide range of colors
- Green and dark colored foliage
- Flowers selfcleaning
- Continue flowering for whole summer
- Compact growing habit
- Propagated by tissue culture
- Virus free stock
- Breeding by Green Works







**Green Works**  
Breeding & Young Plants



# Green Works Ranunculus Butterfly and Romance type





# Green Works Ranunculus;

- Wide range of colors and flower type
- Long vase life
- Grown in our greenhouse in Holland and Portugal
- Propagated by tissue culture
- Virus free stock
- Offer dry and pre-sprouted bulbs
- Good size bulbs



# Ranunculus Butterfly Ariadne





# Many flowers per stem



# Artemis

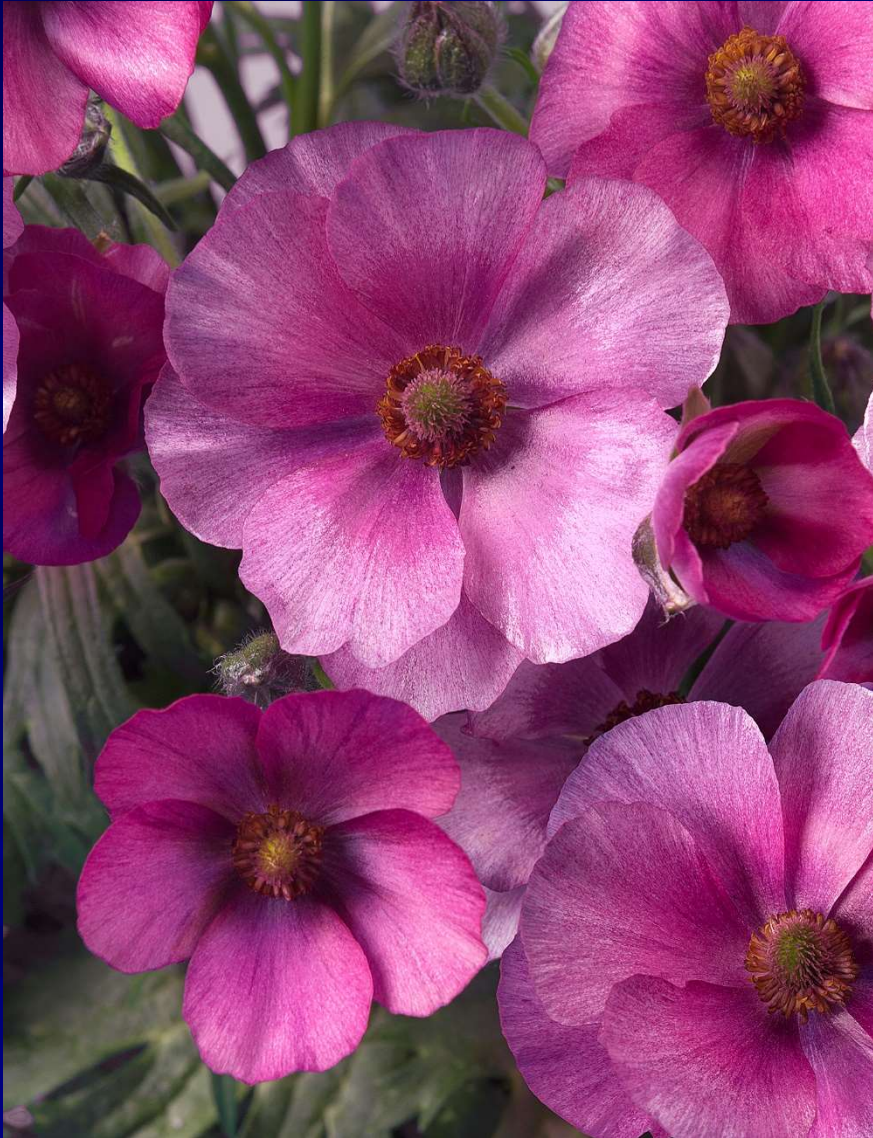


# Dione





# Europe



# Hera

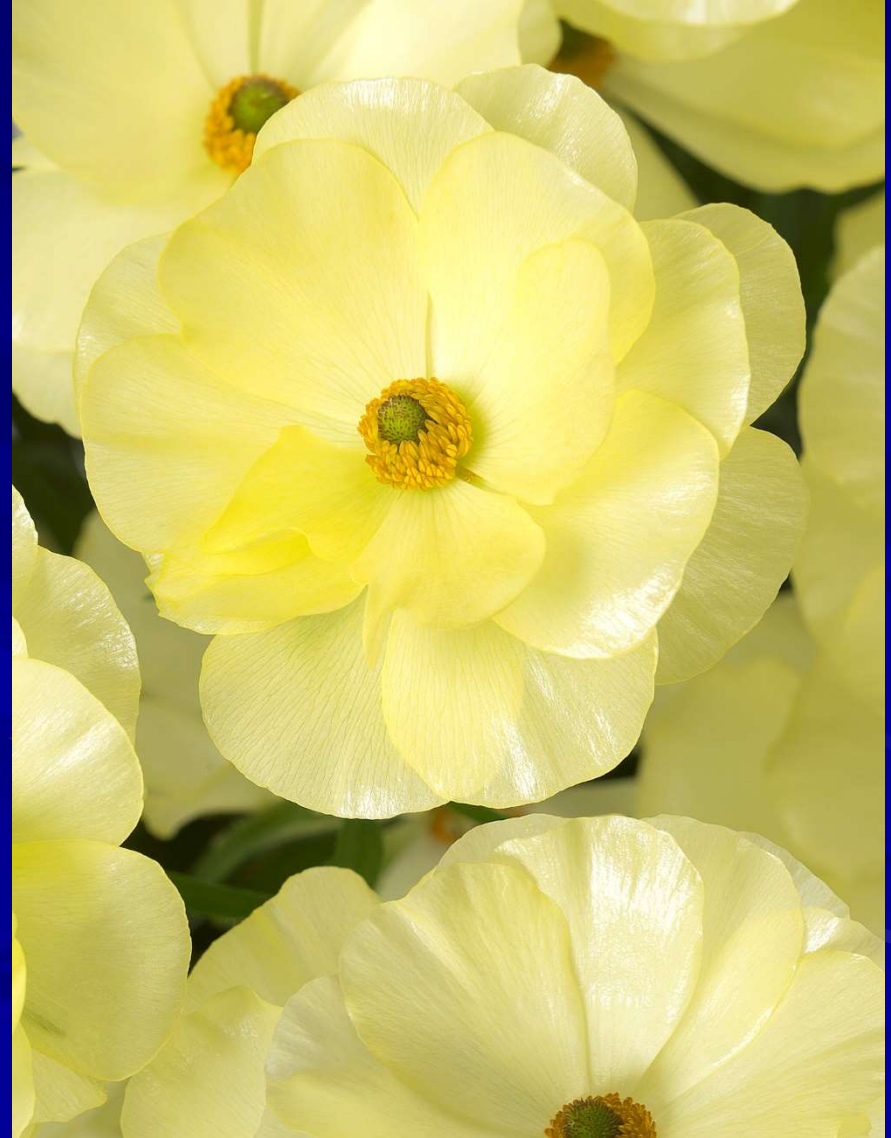




# Hades



# Helios

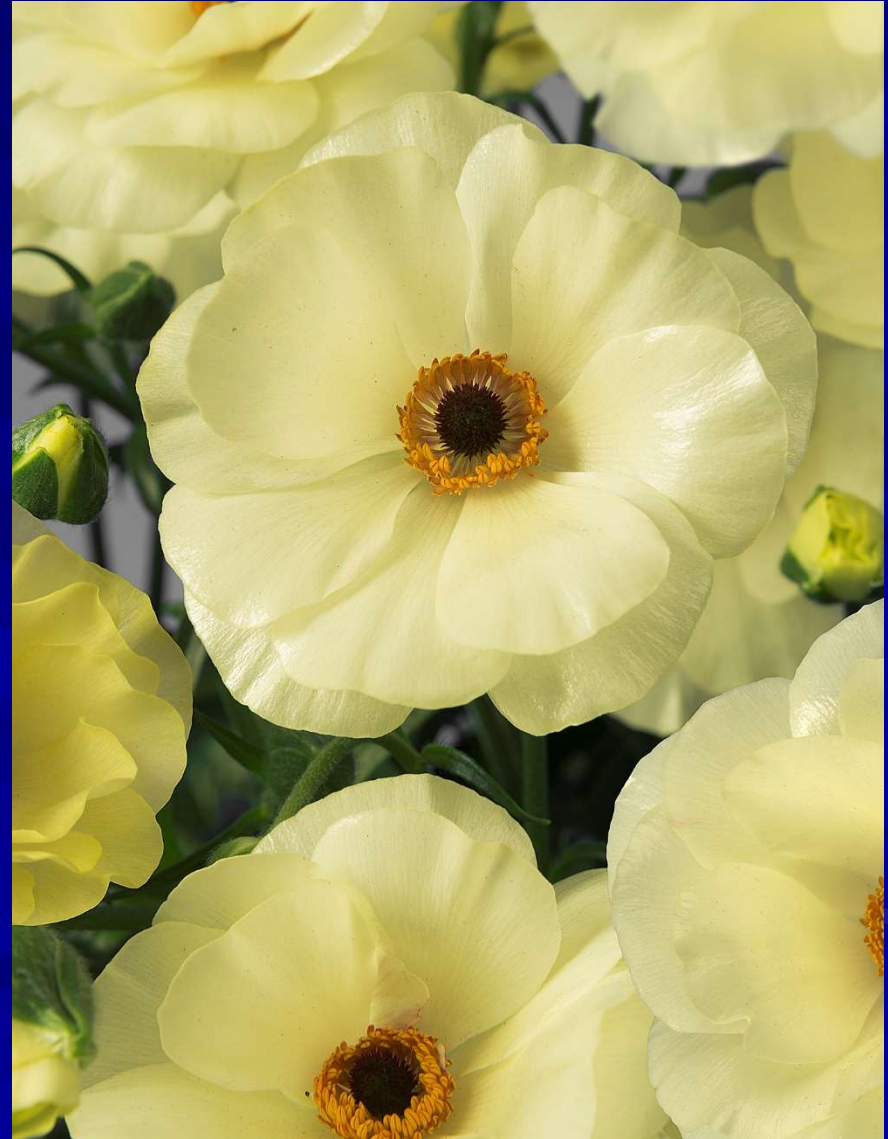




# Isis



# Litai





# Lycia



# Minoan

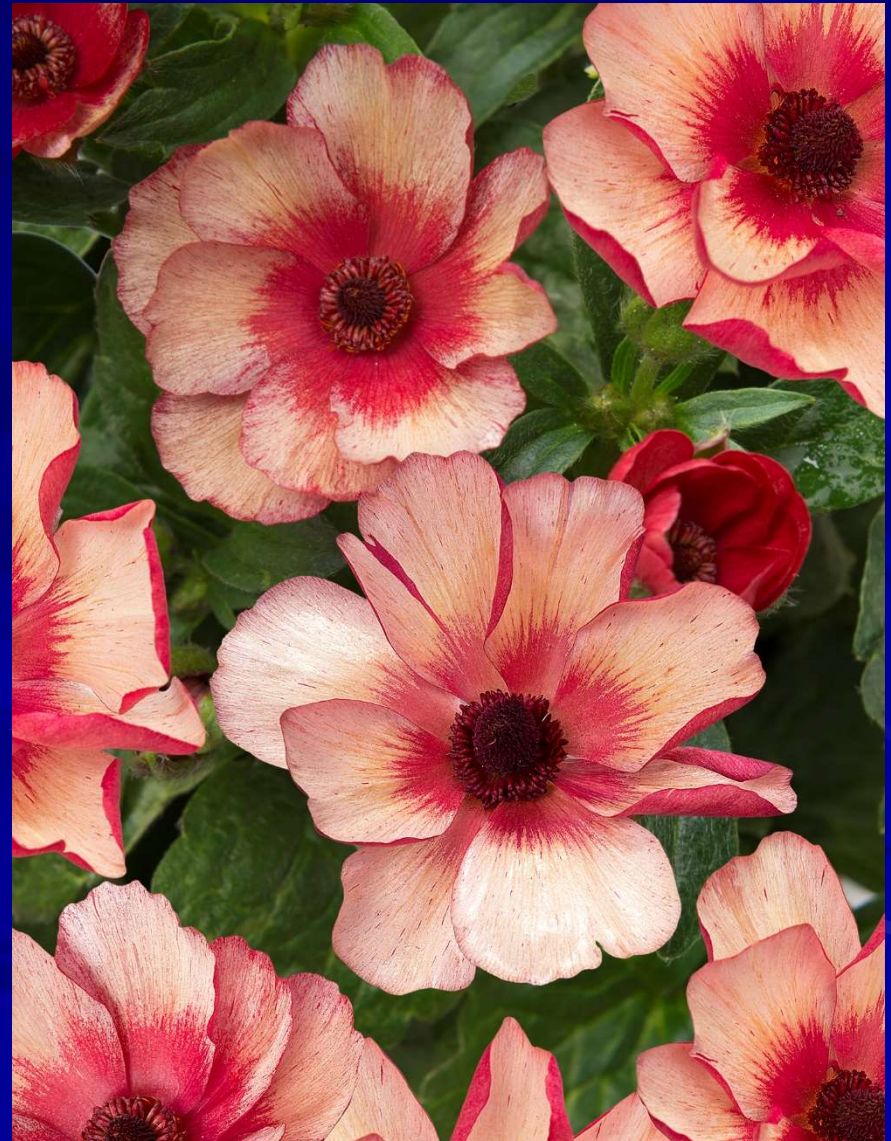




# Phytalos



# Theseus





# Butterfly type pinch first flower





# Ran. Butterfly harvest stage





# Ranunculus Romance

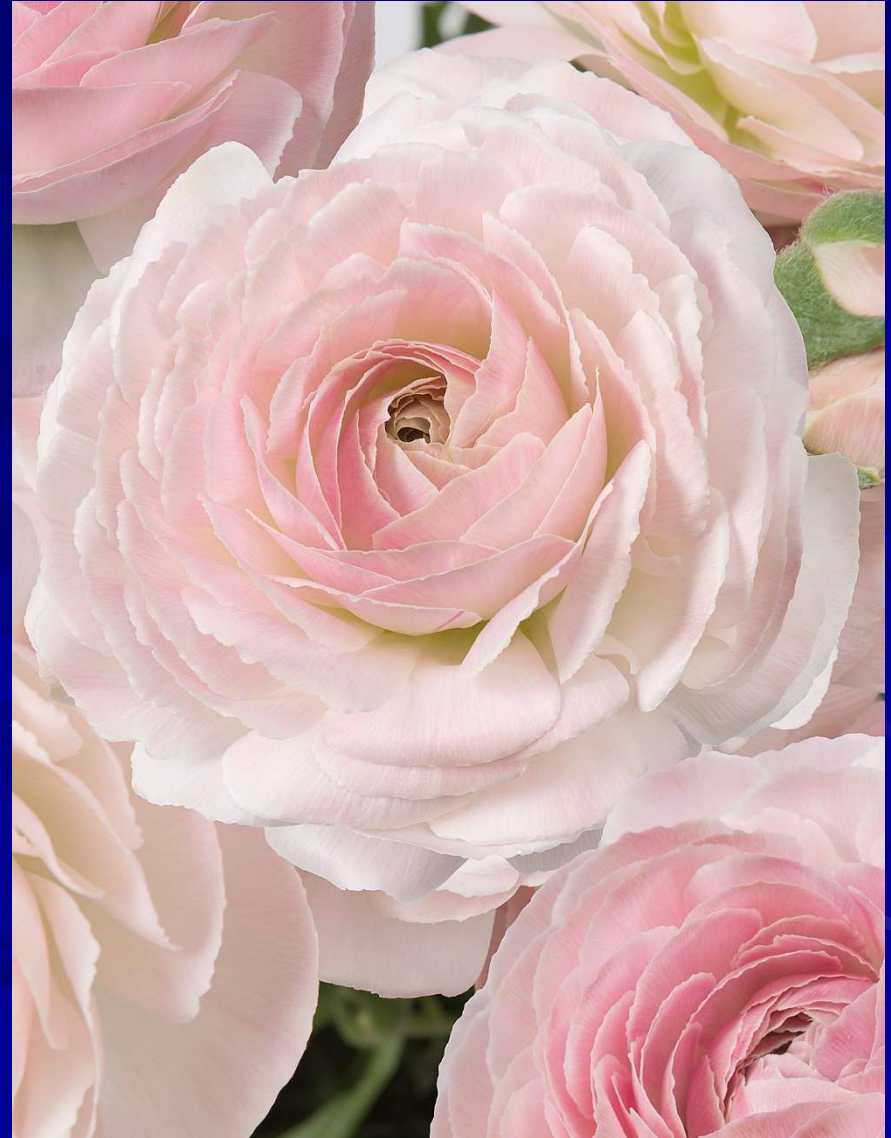




# Courchevel

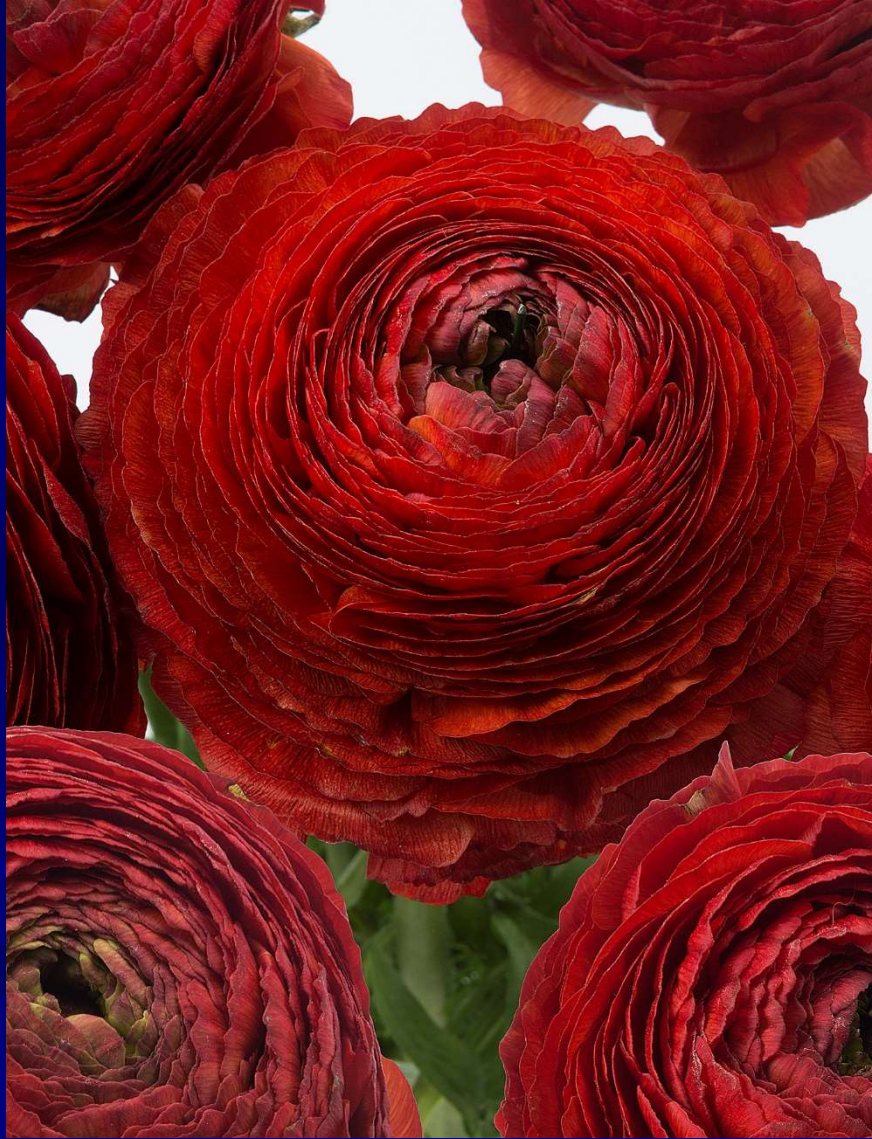


# Maillane

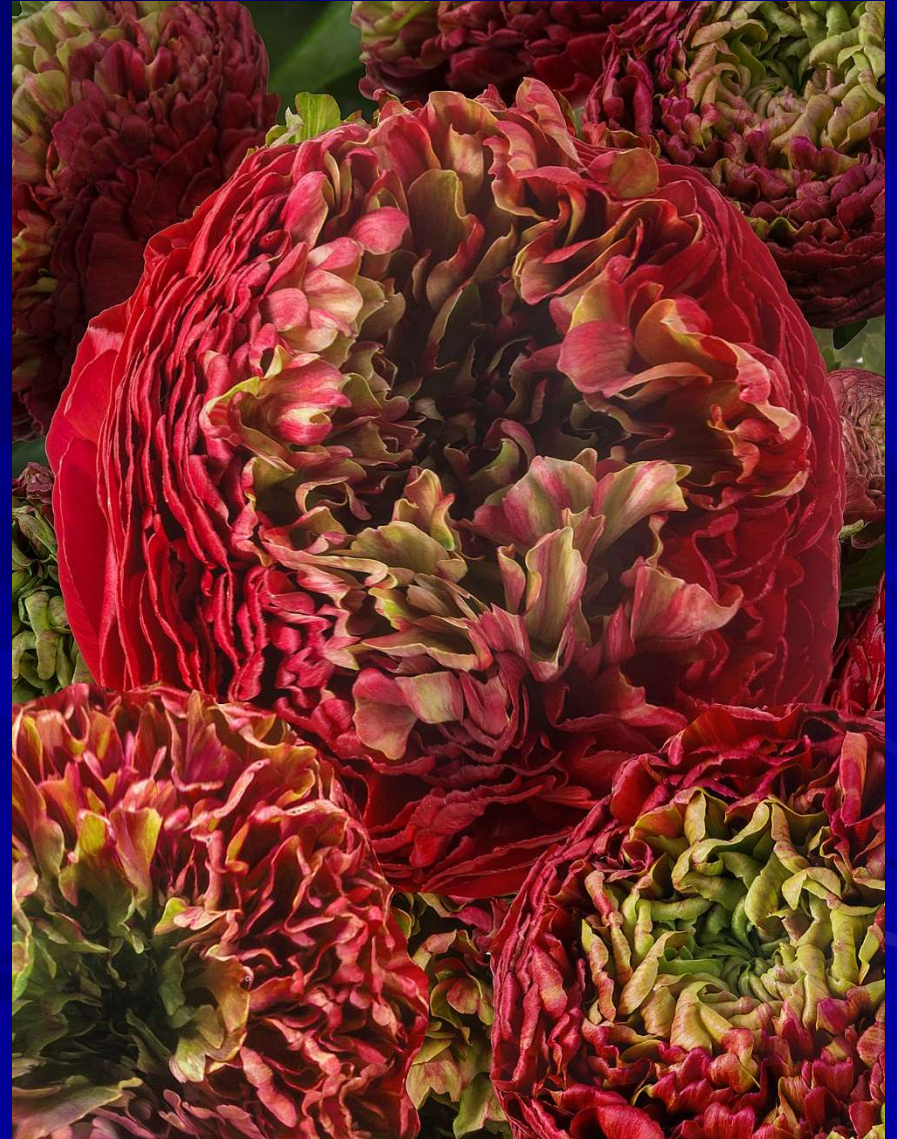




# Get Lucky

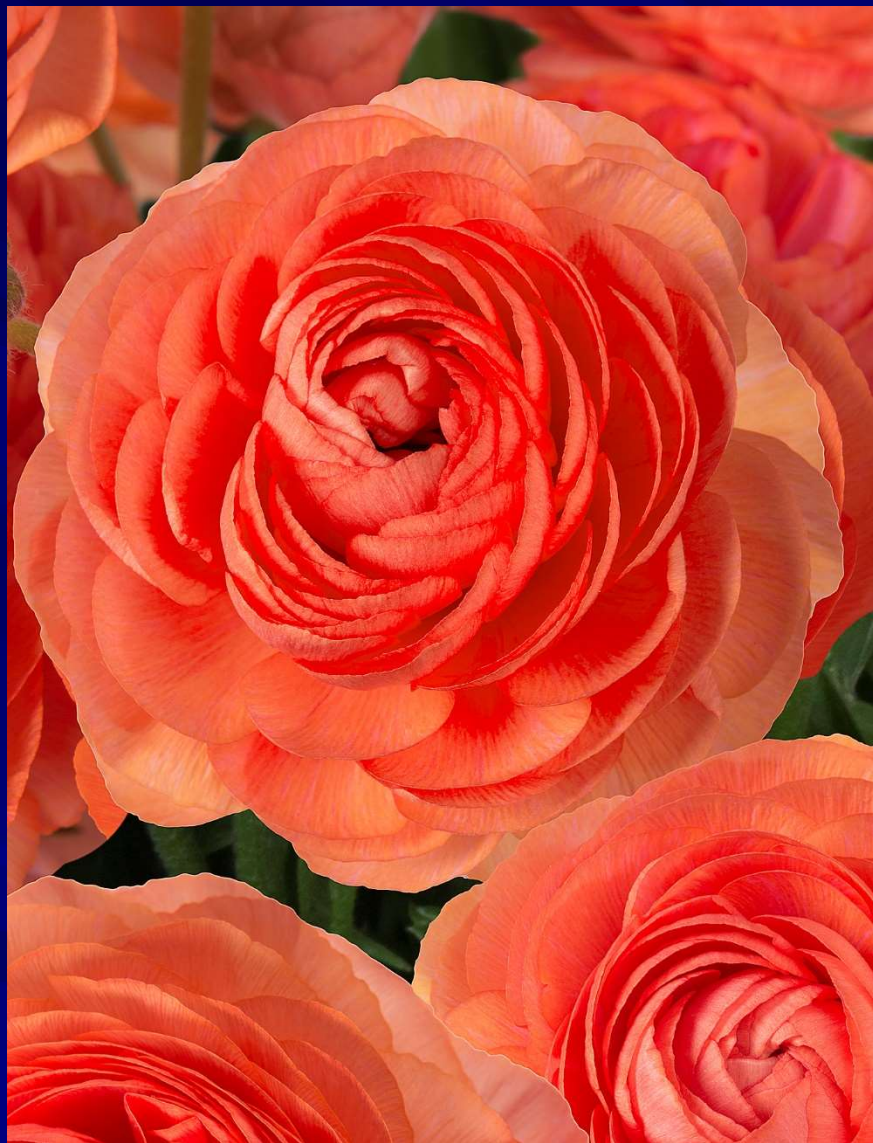


# Odon

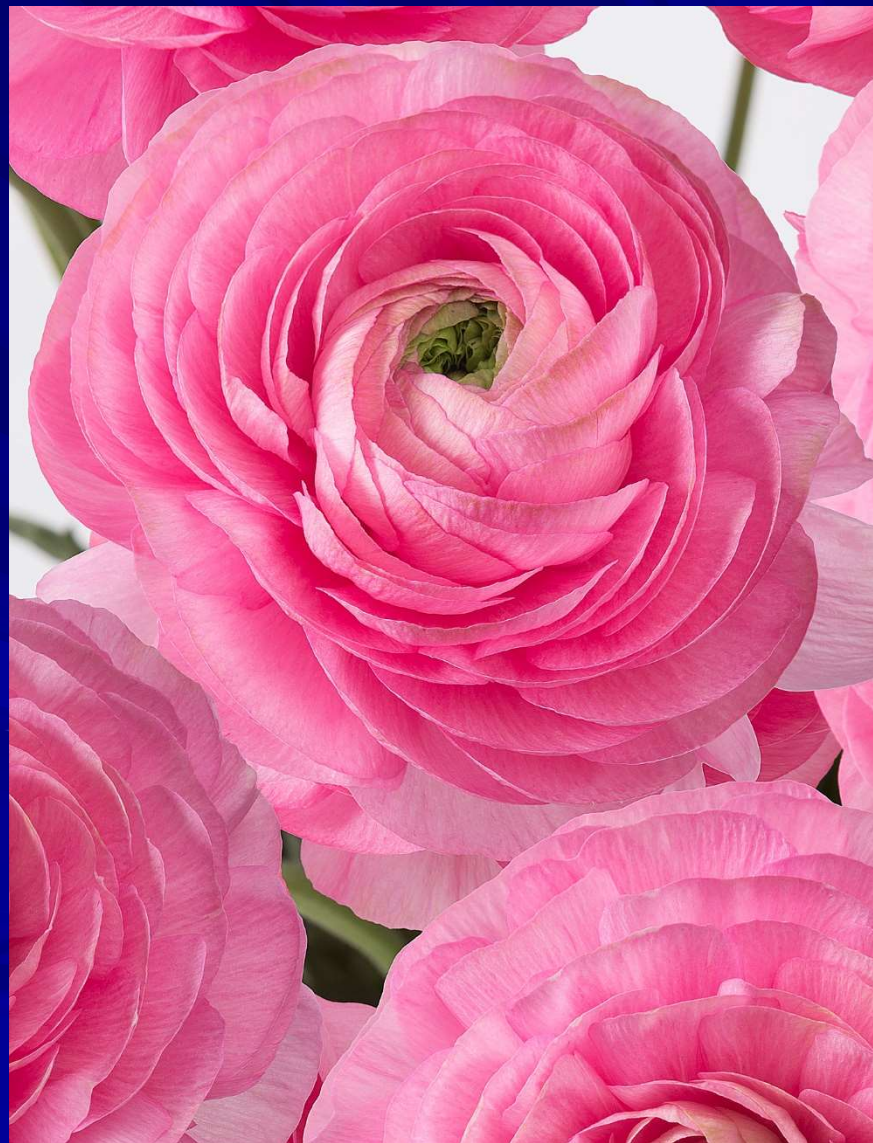




# Paradou



# Rosy Cheeks

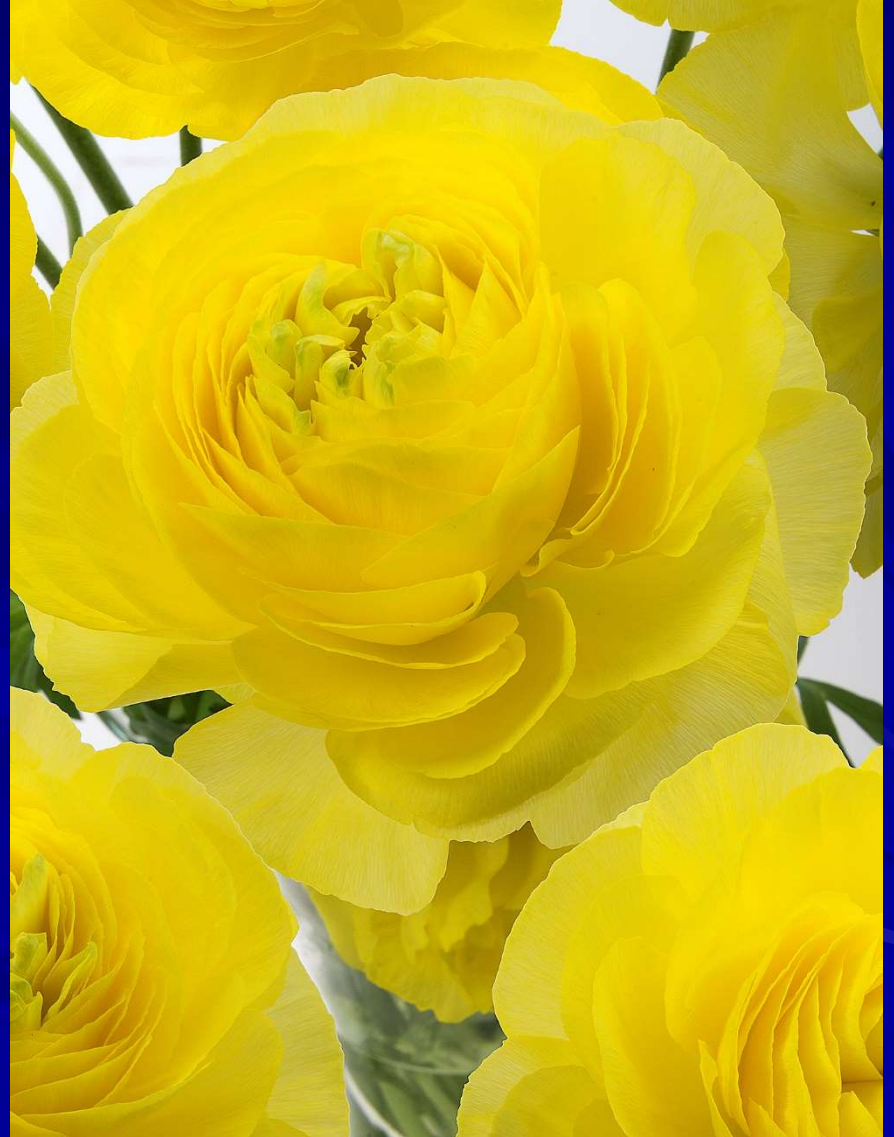




# Quimper



# St. Tropez





# Start from tissue culture plants in greenhouse





# Butterfly 9 bulbs per meter Romance 18 bulbbs per meter





# In plastic tunnel on beds, 4 rows





# In plastic tunnel on ridges





# Plastic tunnel ready to harvest





# Trial greenhouse in Holland





# Ranunculus Butterfly in pots





# Ranunculus Butterfly in landscape





**Ranunculus Butterfly &  
Romance beautiful flowers  
with excellent vase life.**

**Trendy flowers fit in today's  
style**





























# Green Works Peonies





# Each year an extended catalog with professional pictures and description





# We grow all our Peonies in Limburg (southern part of Holland)

















































# Green Works Peonies;



- 2 year crop, young healthy roots
- Dutch grown from our own fields
- Grown on sandy soil
- We do not harvest flowers from our fields
- Checked 3 times in the field for viruses and true to name
- Free from nematode
- Free of perennial weeds
- Good size roots



# Green Works Care;



**Green Works treats planting stock of Peony with Green Works Care the benefits are:**

- **No damage caused by warm water treatments**
- **Because the treatment is carried out in-house the plants are less dehydrated**
- **Special preventive treatment against root knot nematodes and leaf nematodes**
- **Plants retain more content and vigor**
- **Plant grows better in the first year**
- **More flowers in the second year**



# Green Works support;



- **Nieuwsletter via e-mail 5-6 x per year**
- **Extensieve website**
- **Personal visits or support via WhatsApp / WeChatt**
- **Professional advise via e-mail**
- **Peony flowershows wk. 23 & 24**
- **Peony trial garden**
- **Assortment & growing advise**



# Green Works trial garden; Planted more than 300 varieties





# preparation peony:



- Make sure there is enough water for irrigation
- Spend enough time planting, you only plant once
- Plant deep enough
- Make sure there is proper drainage (especially in winter)
- Make sure you have enough natural cooling



**Different soil types have  
different requirements**



# Peonies on sandy soil





# Peonies on clay soil





# Why plant 3-5 eye instead of 2-3 eye peony plant:

<u>Year</u>	<u>2-3 eye</u>	<u>3-5 eye</u>
<b>Planting fall 2019</b>		
Spring 2020	0	0
Spring 2021	0	3
Spring 2022	4	7
Spring 2023	6	8
Spring 2024	7	9
Spring 2025	7	9
Spring 2026	8	9
<b>Total flower stems</b>	<b>32</b>	<b>45</b>





# Flower development peony:

- First year after planting peony flower is never of mature size. Sometimes a double variety flowers even single.
- 2nd year after planting flower becomes larger and more mature but still not full size yet.
- 3rd year after planting Peony flower becomes mature.
- Flower development depends on soil condition, fertilizing and level of moisture



# Non-flowering mostly due to lack of water





# Drip irrigation most effective







# Disease and growing problems in Peonies;



# Weed control:



**Winter; Kerb or Stomp 2 L./Ha**

**(Never spray in rain)**

**Spring / Summer;**

**AZ500 0,2L/ Ha. & Squal 0,5%**

**(Spray with hood between plants / rows)**

**Over foliage: Coltix with oil-H**

**In fall; Basta**



# Make sure you plant Peony deep enough





# Herbicide damage





# Herbicide damage of winter spray





# Botrytis control apply Collis in spring





# Botrytis damage





# Botrytis damage





**In spring when growing spray  
every 5 days against botrytis  
with;**

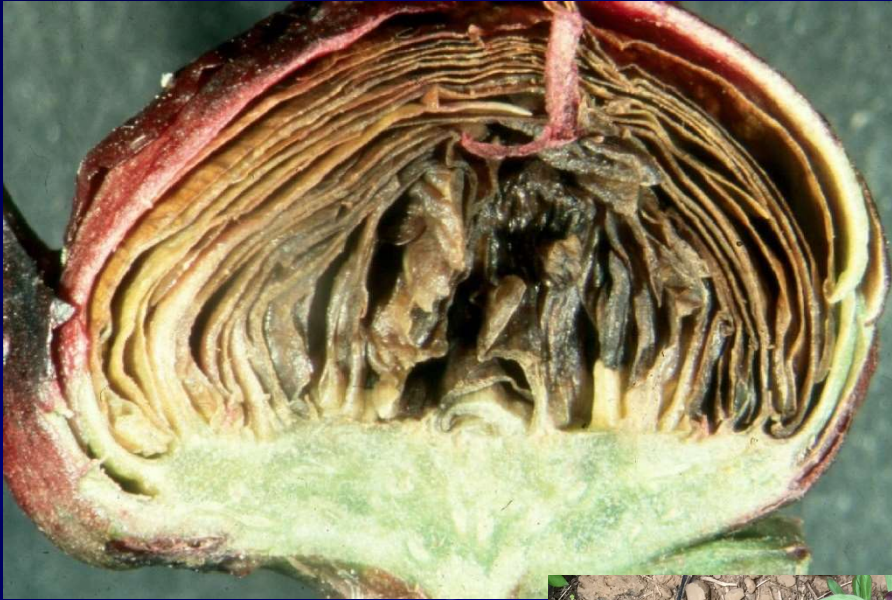
**Teldor, Kenbyo,  
Luna-privilege, Signum and  
Switch**

**(change between type)**

**(do not spray for 2 days after night frost)**



# Leaf nematode

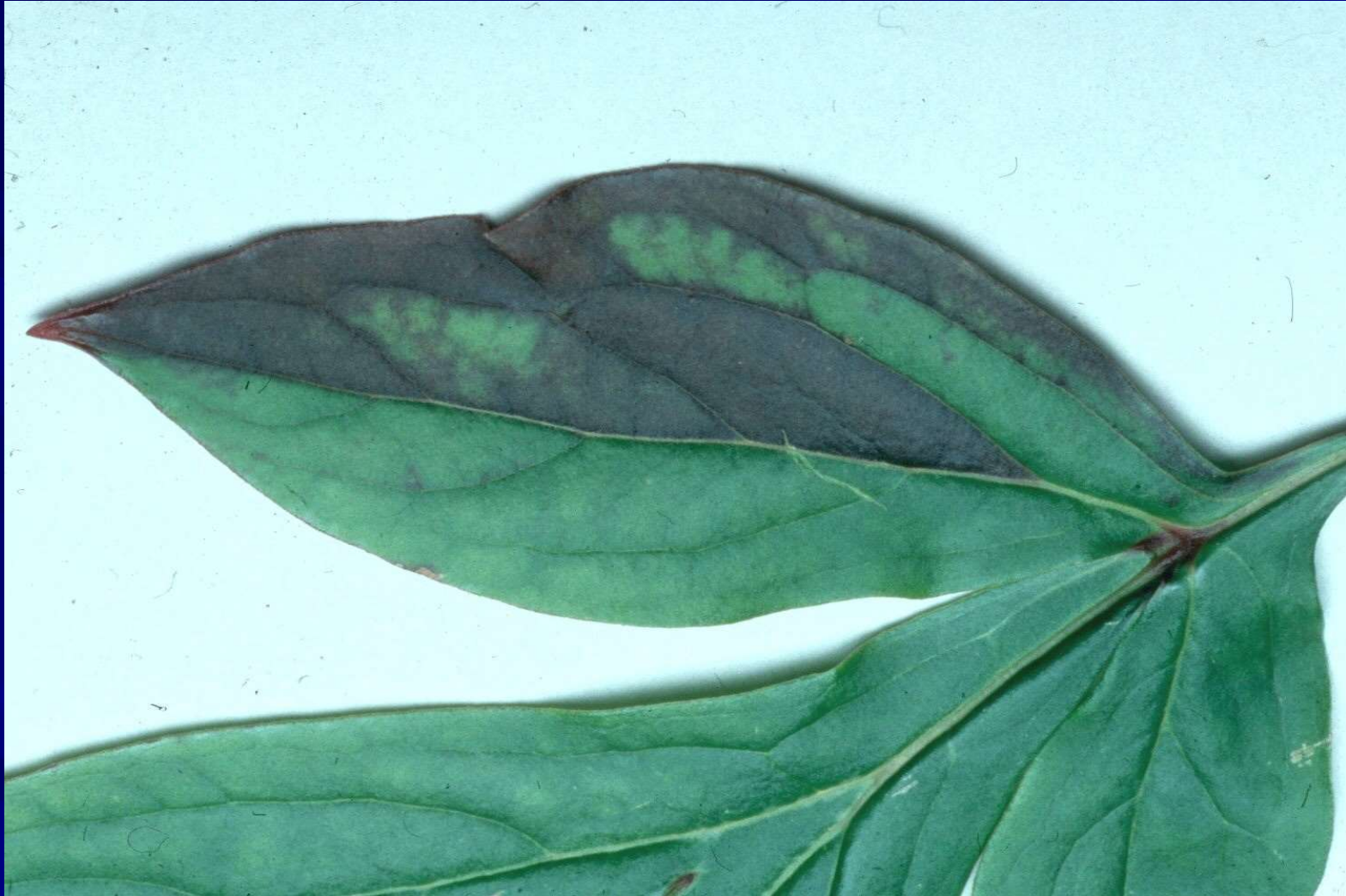


# Botrytis





# Leaf nematode





# Leaf Nematode



- **Keep parcel free from weeds**
- **Remove the dried out flower buds**
- **Spray with Vertimec Gold three times in summer at night when foliage is wet with dew, at this time the nematode will be at service of the leaf**
- **Cut back the plants around the middle of August and discard the plant rests, only during dry weather.**



# Virus in Peony





**left: Botrytis, right Cladosporium**





# Leafspot (Cladosporium)

**Preventive spraying:**

**Daconil, Flint, Ortiva or**

**Switch (change between type)**

**Spray in morning so that plants will  
not be wet during night**

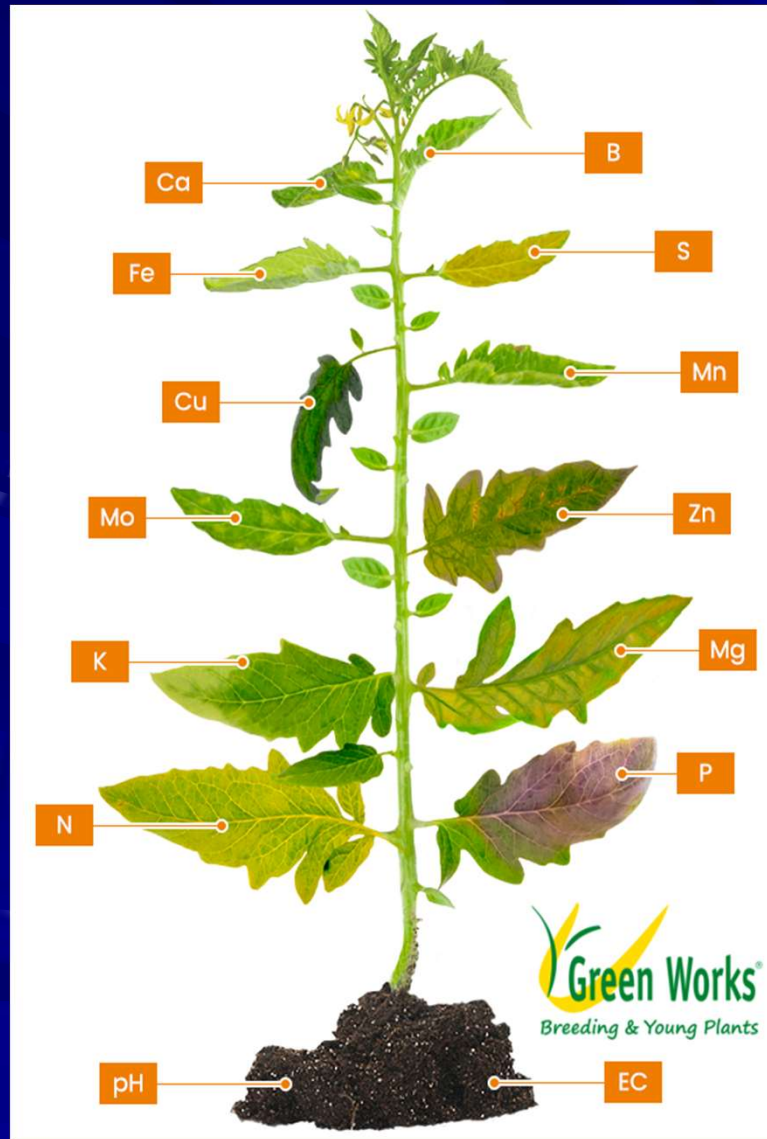


# Fertilizing for Peony

- Always take soil sample
- Average need for peony;
  - N                    150 Kg / ha
  - Phosphate        100 kg / ha
  - Kali                225 kg / ha
  - Magnesium      100 kg / ha



# Micro elements for Peony





# Fall Peony care;

- Remove all old foliage in fall
- Cut stems to about 10 cm.  
above the soil
- Spray Copper after removing foliage in fall



**Most important is to have no weeds (summer and winter) and work clean.**

**Than you will have least amount of problems**





**Peony cut flowers are  
produced worldwide in areas  
with enough cold;**

**Israël / Morocco**

**Italy / France**

**Netherlands**

**USA / Canada**

**China / Japan / Korea**

**Chili / New-Zealand**





# To extend flowering season of Peonies following options;

Heated greenhouse

Cold greenhouse

Plastic tunnel

Outside

Storing in cooler



**Peonies in greenhouse  
heated or cold,  
have cold requirement of  
minimum temperature of 5  
degrees C. or colder**





# Peonies in plastic tunnel (open sides)





# Peonies outside production





# Peonies stored in cooler





# Removing of sidebuds?





# Peony Sarah Bernhardt





# Peony Sarah Bernhardt cut exact right





# Peony Duchesse de Nemours





# Peony in correct cutting stage





# Right cutting stage is essential for good market





**Plant Peonies based on  
assortment and use.**

**Not every variety is suitable  
for every use.**





# Itoh Peonies





# Itoh Peony (Intersectional peony)

- Excellent Peony for the garden
- Less suitable for cutflower, shorter vase life
- Above ground as Tree Peony, under ground as lactiflora Peony
- Flowers of itoh peony have a lot of variation in color and shape even on one plant



# Patio Peony



**Compact growing**

Patio Peony Athens

Patio Peony Dublin

Patio Peony Kiev

Patio Peony London

Patio Peony Madrid

Patio Peony Oslo

Patio Peony Roma



**Green Works**  
Breeding & Young Plants

Witte Paal 341  
1742 LE Schagen  
The Netherlands  
T: +31(0)224 590 173  
F: +31(0)224 590 925  
info@green-works.nl  
www.green-works.nl

**Assortment**

## Patio Peony™

- Compact growing
- Special assortment
- Selected for container growing
- Compact
- Speciaal assortiment
- Geselecteerd voor de teelt in pot





# Peony for pots





# Do not forget “old” varieties

Alexander  
Fleming (<1950)



Duchesse de  
Nemours (1856)



Sarah  
Bernhardt (1906)





# Do not forget “old” varieties

**Festiva Maxima    Mons. Jules Elie    Shirley Temple**





# Angel Cheeks



# Etched Salmon





# Pillow Talk



# Nick Shaylor

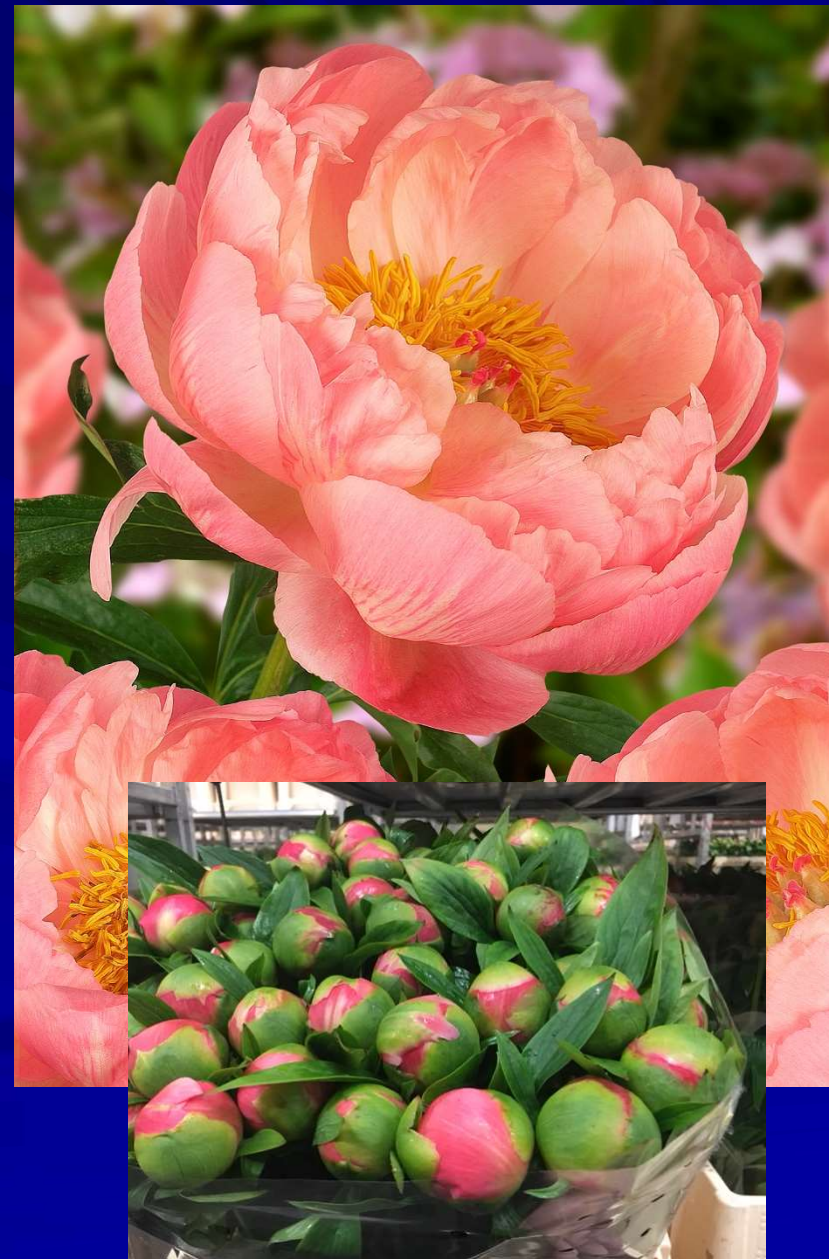




# Coral Sunset



# Coral Charm





# Brother Chuck



# Lemon Chiffon





# Florance Nicholls



# Madame Claude Tain





# Bridal Shower



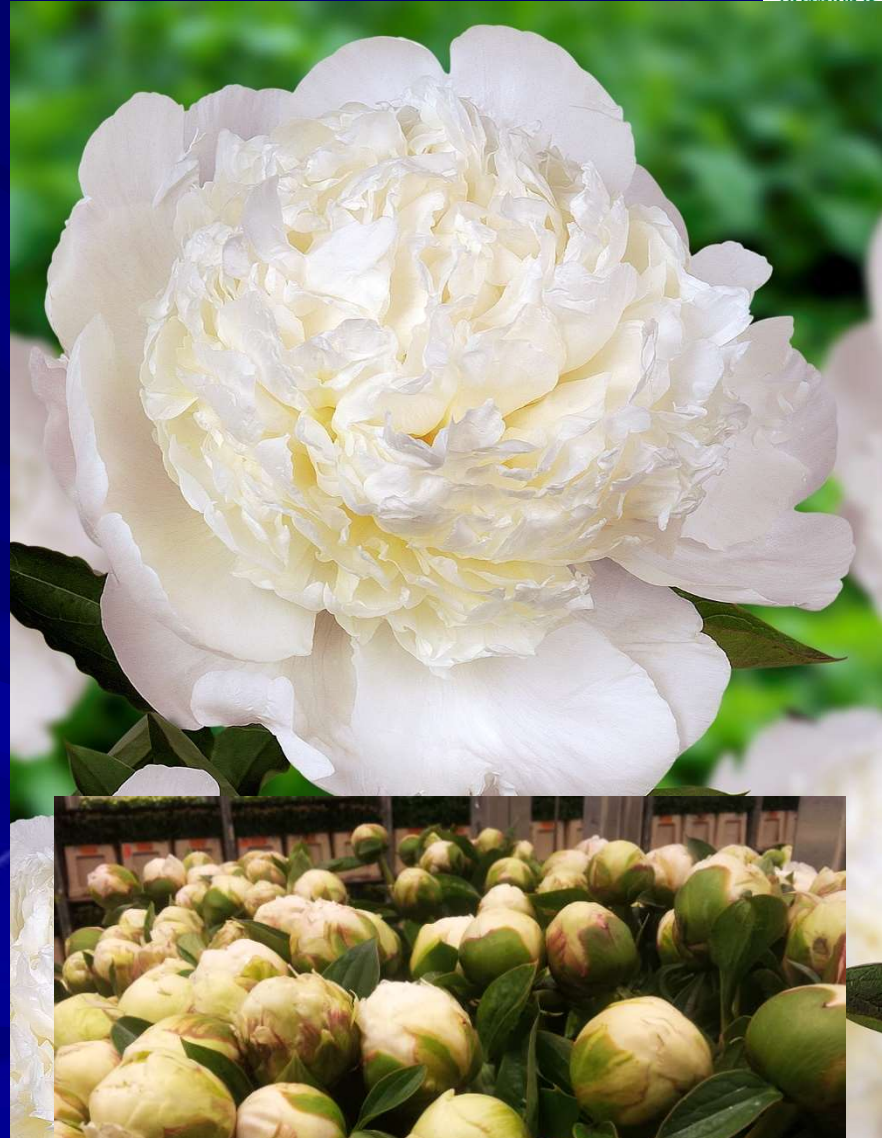
# Moon over Barrington





# Class Act

# Bowl of Cream





# Command Performance

# Belgravia



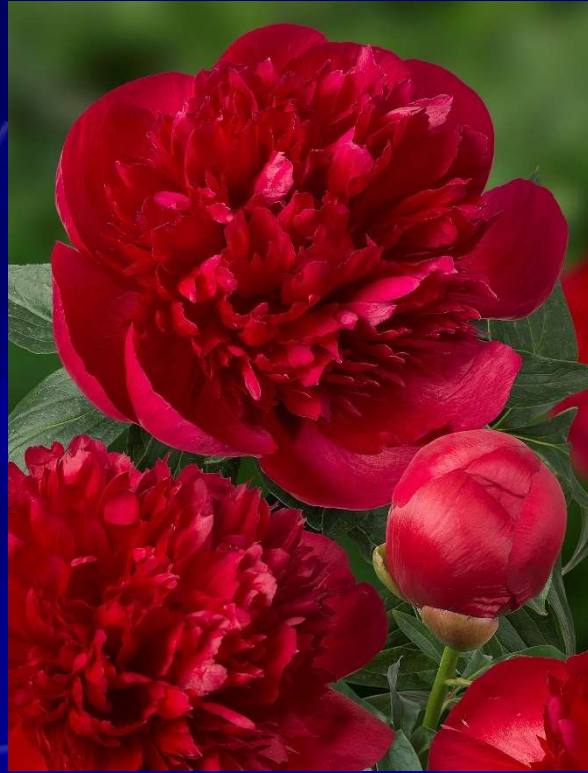


# Find the differences?

**Christmas Velvet**



**Diana Parks**



**Red Charm**



**Different varieties have different requirements**



# Green Works flower trials



**For best results use  
Flowerfood**





# Green Works trial garden; Planted more than 300 varieties





# Green Works flower shows





# Green Works flower shows week. 23 & 24





# Green Works flower shows





# People who make it work





**Peony is a beautiful flower  
with lots of potential  
BUT  
it is essential that growers  
produce flowers in right  
cutting stage to continue the  
success of the Peony with the  
consumer.**





**Thank you for your attention**

**for more information see:**

**[www.green-works.nl](http://www.green-works.nl)**

